

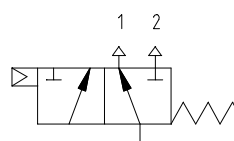
# Y VALVE

## MINI Y VALVE

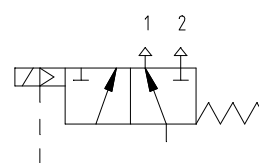


Mini Y valve and Y valve

Y valves are 3/2 spring recoil valves with pneumatic or electro-pneumatic control. They are leak proof with internal pressurisation on the mini Y valve.



Pneumatic control



Electro-pneumatic control

### Presentation

Valve Type	Connecting pipes diameters		
	Input/Output	Control	Pressurisation
6/8 Y valve	6/8	4/6	3/5
4/6 Y valve	4/6	4/6	3/5
3/5 Y valve	3/5	4/6	3/5
Mini Y valve 2.5/4	2.5/4	4/6	-
Mini Y valve 3/5	3/5	4/6	-

### Technical Specifications

- **Fluid supported:** Air ; Gas (following prior consultation of our technical services department)
- **Differential pressure:** 0 - 10 bar with pressurised valve compressed
- **Max. allowed pressure:** 12 bar
- **Ambiant temperature range:** 0°C to + 55°C
- **Control fluid:** Dry clean air supply
- **Max. control pressure:** 10 bar
- **Min. control pressure:** 4 bar
- **PNormal control pressure:** 6 bar
- **Flow diameter:** 4 mm (Y valve) - 2 mm (mini Y valve)
- **Life expectancy:** 4 million cycles
- **Dimensions:** 110 x 27 x 190 (Y valve) - 110 x 27 x 117 (mini Y valve)
- **Weight with controler:** 695 g (Y valve) - 450 g (mini Y valve)